

# SIEMENS

## Quick Start Guide

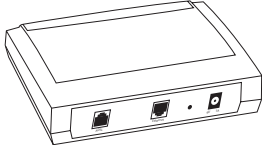


## SIEMENS ADSL C2-010 ADSL Bridge Modem

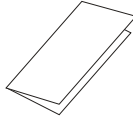
- Do never open the housing!
- Use only the power supply provided with this device.
- Use only the cables provided with this device and do not perform any modifications on them.

# Before you begin

Verify that the following items came with your SIEMENS ADSL C2-010 Bridge Modem kit:



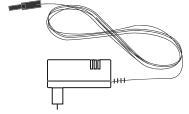
ADSL Bridge Modem



Quick Start Guide



CD-ROM



Power supply



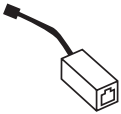
ADSL cable  
(gray)



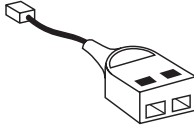
Ethernet cable  
(yellow)

## Optional:

Your service provider may include Stand-alone Line Filter(s) and Y-Line Filter(s). If you have received any of these items, follow the instructions provided in this guide for basic installation. If you need further assistance installing these items, please contact your service provider.



Stand-alone  
Line Filter



Y-Line Filter

## System Requirements

Before starting the installation of the ADSL Bridge Modem, make sure your computer is equipped with:

- Internet Browser (Internet Explorer or Netscape) installed
- LAN interface (Ethernet) with RJ45 socket (Windows 95, 98, NT4, ME, 2000, XP, Macintosh, Linux)



# Step 1:

## Install the Line Filter

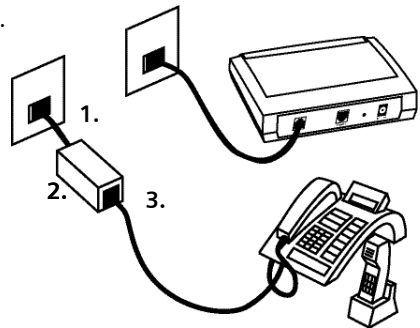
Devices such as fax machines or phones that share the same phone number as your ADSL account require a line filter, which prevents modem noise from disrupting the ADSL signal on the phone line. Filters can be in the form of a stand-alone Line Filter or a Y-Line Filter. The Y-Line Filter can be used if your ADSL modem will share the same phone jack with another device.

---

### Stand-alone Line Filter

For each device that shares the ADSL phone number:

1. Unplug the device's cord from the phone jack.
2. Plug the filter into the phone jack.
3. Plug the phone cord (or other device cord) into the filter.

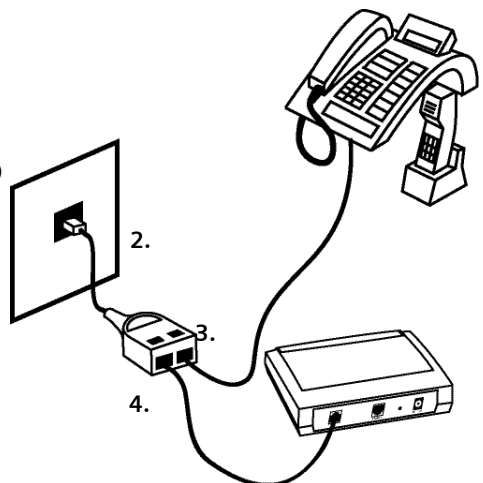


---

### Y-Line Filters

If your ADSL modem and another device will share the same phone jack, install a Y-Line Filter:

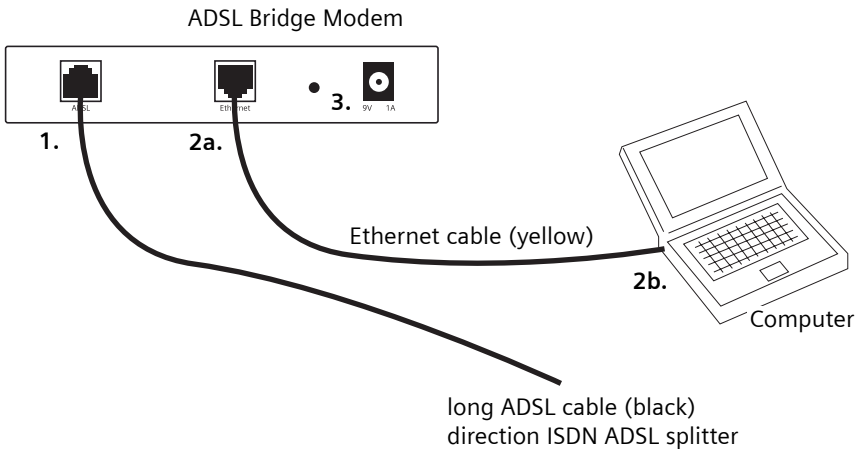
1. Unplug the device's cord from the phone jack.
2. Plug the Y-Line Filter into the phone jack.
3. Plug the phone cord (or other device cord) into the "PHONE" jack of your Y-Line Filter.
4. Plug the ADSL cord into the "ADSL" jack of your Y-Line Filter.



## Step 2:

# Connect the ADSL Bridge Modem via Ethernet interface

1. With your computer off, plug the end of the ADSL cable (gray) into the DSL port of your ADSL Bridge Modem.
- 2a. Connect the Ethernet cable (yellow) to the LAN port of your ADSL Bridge Modem.
- 2b. Connect the other end of the Ethernet cable to the LAN port of your computer.
3. Connect the power supply to your ADSL Bridge Modem.
4. Plug the power plug into a power outlet.
5. Turn your computer on and wait until your operating system (OS) is started up.
6. Proceed with step 3 on the next page (Read first the introduction and continue then with the paragraph related to your operating system).



## Step 3: Configure the PC (TCP/IP settings) Introduction

In step 3, you will learn how to configure your computer to communicate with ADSL Bridge Modem.

To do this, you will need to configure your PC's network settings to obtain an IP address automatically. Computers use IP addresses to communicate with each other across a network or the Internet.

Find out which operating system your computer is running, such as Windows 95, Windows 98, Windows Me, Windows NT4, Windows 2000 or Windows XP.

You will need to know which operating system your computer is running. You can find out by clicking on **Start** -> **Settings**. (If your Start menu doesn't have a Settings option, you are running Windows XP. You can select the Control Panel directly from the Start menu.) Then, click on **Control Panel** and double-click on the **System** icon.

Click the **Cancel** button when done.

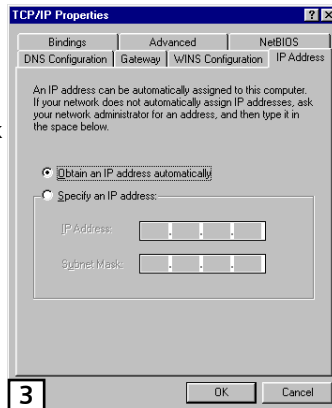
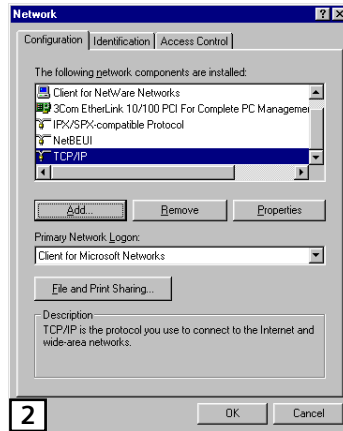
Once you know which operating system you are running, follow the directions in this step for your computer's operating system. The next few pages tell you, step by step, how to configure your TCP/IP settings based on the type of Windows operating system you are using.

## Step 3a: Configure the PC (TCP/IP) settings for Windows 95



Windows 95 users need the Windows 95 Installation CD to complete the installation.

1. Click on **Start -> Settings -> Control Panel**. Double-click on the **Network** icon to open the Network screen.
2. Select the **Configuration** tab and highlight the **TCP/IP** line for the applicable Ethernet adapter<sup>1)</sup>. If the word TCP/IP appears by itself, select that line<sup>2)</sup>. Click on Properties.
3. Click the **IP Address** tab and select **Obtain an IP address automatically**.
4. Click on the **Gateway** tab and verify that the **Installed Gateway** field is blank. Click on OK.
5. Click again on **OK**. Windows ask you for the original Windows installation disk or additional files. Supply them by pointing to the correct location, e.g. D:\win98, where "D" represents the letter of your CD-ROM drive.
6. If Windows asks you to restart your PC, click on **Yes**. If Windows does not ask, restart your computer anyway.



<sup>1)</sup> Choose a TCP/IP entry whose name contains **Ethernet adapter**. Do not choose a TCP/IP entry whose name is PPPoE, VPN or other.



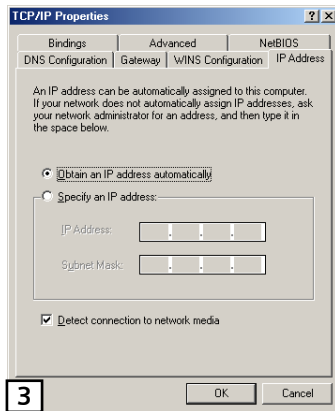
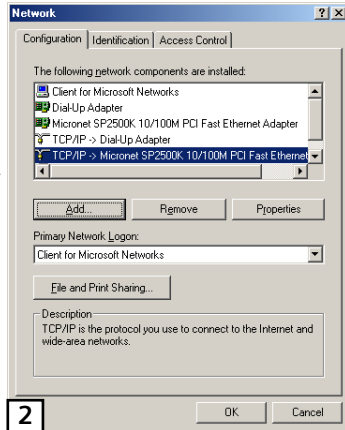
<sup>2)</sup> If there is no TCP/IP line listed, refer to the User Manual on your Aehtra CD-ROM to install TCP/IP now.

# Step 3b: Configure the PC (TCP/IP settings) for Windows 98 and Windows ME



Windows 98 users need the Windows 98 Installation CD to complete the installation.

1. Click on **Start -> Settings -> Control Panel**. Double-click on the **Network** icon to open the Network screen.
2. Select the **Configuration** tab and highlight the **TCP/IP** line for the applicable Ethernet adapter<sup>1)</sup>. If the word TCP/IP appears by itself, select that line<sup>2)</sup>. Click on **Properties**.
3. Click the **IP Address** tab and select **Obtain an IP address automatically**.
4. Click on the **Gateway** tab and verify that the **Installed Gateway** field is blank. Click on **OK**.
5. Click again on **OK**. Windows may ask you for the original Windows Installation disk or additional files. Supply them by pointing to the correct location, e.g. D:\win98, where "D" represents the letter of your CD-ROM drive.
6. If Windows asks you to restart your PC, click on **Yes**. If Windows does not ask, restart your computer anyway.



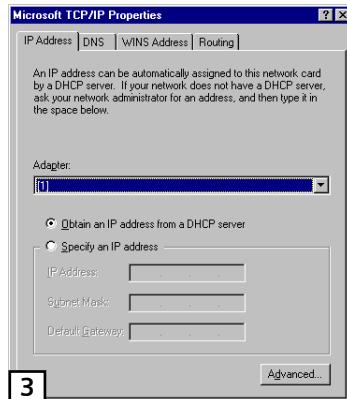
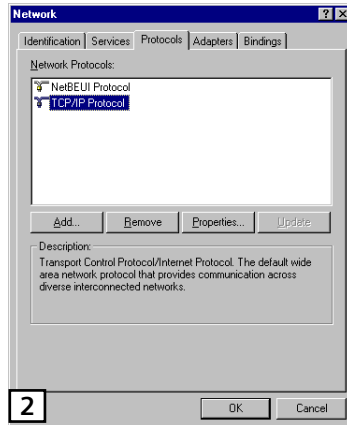
<sup>1)</sup> Choose a TCP/IP entry whose name contains **Ethernet adapter**. Do not choose a TCP/IP entry whose name is PPPoE, VPN or other.



<sup>2)</sup> If there is no TCP/IP line listed, refer to the User Manual on your Aethra CD-ROM to install TCP/IP now.

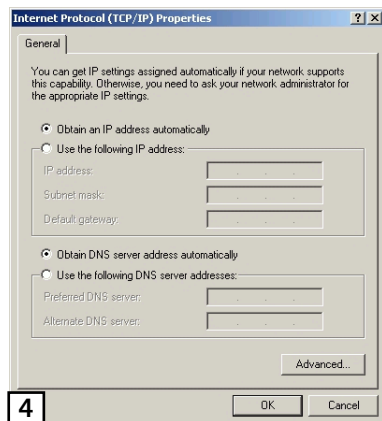
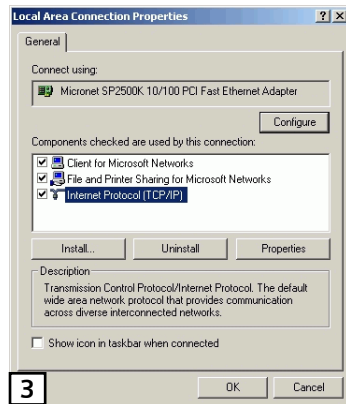
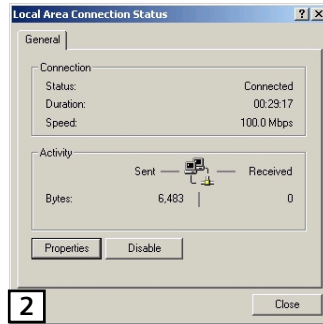
## Step 3c: Configure the PC (TCP/IP settings) for Windows NT4

1. Click on **Start -> Settings -> Control Panel**. Double-click on the **Network** icon. The Network screen will appear.
2. Select the **Protocol** tab and highlight the **TCP/IP** line. Click on **Properties**.
3. Select the **IP Address** tab and select **Obtain an IP address from a DHCP server** and click on **OK** on the subsequent screens to complete the PC's configuration.
4. When prompted with "Activate DHCP" dialog box, click **Yes**.
5. Restart your computer.



# Step 3d: Configure the PC (TCP/IP settings) for Windows 2000

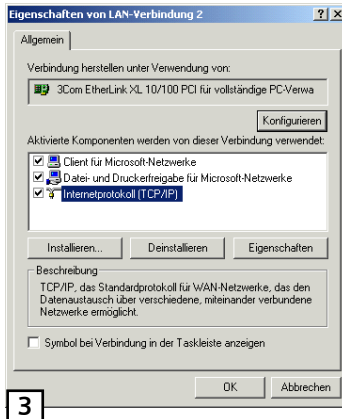
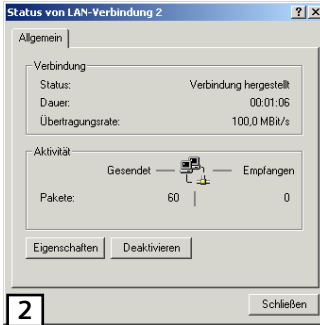
1. Click on **Start -> Settings -> Control Panel**. Double-click on the **Network and Dial-up Connections** icon. The Network screen will appear.
2. Select the **Local Area Connection** icon for the applicable Ethernet adapter (usually it is the first Local Area Connection listed). Double-click on **Local Area Connection** and click on **Properties**.
3. Select **Internet Protocol (TCP/IP)** and click on **Properties**.
4. Select **Obtain an IP address automatically** and click on **OK** on the subsequent screens to complete the PC's configuration.
5. Restart your computer.



# Step 3e: Configure the PC (TCP/IP settings) for Windows XP

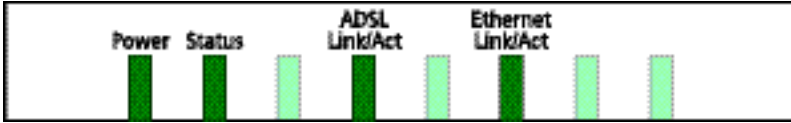
The following instructions assume you are running Windows XP's default interface. If you are using the Classical interface (where the icons and menus look like previous Windows versions), please follow the instructions for Windows 2000 (Step 3b).

1. Click on **start -> Control Panel**. Click on the **Network and Internet Connections** icon. Click on the **Network Connections** icon. The Network screen will appear.
2. Select the **Local Area Connection** icon for the applicable Ethernet adapter (usually it is the first Local Area Connection listed). Double-click on **Local Area Connection** and click on **Properties**.
3. Select **Internet Protocol (TCP/IP)** and click on **Properties**.
4. Select **Obtain an IP address automatically** and click on **OK** on the subsequent screens to complete the PC's configuration.
5. Restart your computer.



## Step 4: Front panel system messages

The following illustration shows the front panel of the ADSL Bridge Modem:



### LED Indicators

The ADSL Bridge Modem is equipped with LEDs on the front panel as described in the table below (from left to right):

LED	Color	Status	Description
Power	green	On Off	Unit is powered on Unit is powered off
Status	green	On	Indicates that the device is ready for use
ADSL Link/Act	green	Short Blinking On Irregular Blinking	The Bridge Modem is in 'training' ADSL link is established Indicates ADSL traffic
Ethernet Link/Act	green	On Off Irregular Blinking	Ethernet link is established No Ethernet link Indicates Ethernet traffic

# SIEMENS

Siemens Switzerland Ltd  
Business Innovation Center BIC F  
Albisriederstrasse 245  
CH-8047 Zurich

## Declaration of Conformity

We hereby declare that the product:

**SIEMENS ADSL C2-010** (ADSL2+ Router for POTS), S1621-Z133-A  
**SIEMENS ADSL C2-010-I** (ADSL2+ Router for ISDN), S1621-Z132-A

(Name of product, type or model, batch or serial number)

is in conformity with the following standards:

**RFI Emission:**

EN 55022 :1998 + A1 : 2000 +A2:2003 Class B : Emission standards  
EN 61000-3-2: 2000 : Limits for harmonic current emission  
EN 61000-3-3: 1995+A1: 2001 : Limitation of voltage fluctuation and flicker in  
low-voltage supply system

**Immunity:**

EN 55024:1998+A1:2001+A2: 2003 : Immunity standard

**Safety:**

EN 60950-1: 2001 +A11:2004 : Safety standard

**We hereby verify that:**

The equipment above listed has tested for compliance with The European Council Directive 89/336/EEC. & The Low Voltage Directive 73/23/EEC. and The Amendment Directive 93/68/EEC. and Radio & Telecommunications Terminal Equipment Directive(R&TTE) 1999/5/EC.

Note: Full test report are available if required.(EME-050929, ETS-05625/00)

**Zurich, 18.08.05**

(place and date of issue)



**Daniel Ebinger, Head of products**

(names and signatures of authorized persons)

## WEEE Texts for User Manuals – B2C (leaflet)



All electrical and electronic products should be disposed of separately from the municipal waste stream via designated collection facilities appointed by the government or the local authorities.

The correct disposal and separate collection of your old appliance will help prevent potential negative consequences for the environment and human health. It is a precondition for reuse and recycling of used electrical and electronic equipment.

For more detailed information about disposal of your old appliance, please contact your city office, waste disposal service, the shop where you purchased the product or your **SIEMENS** partner.

The statements quoted above are only fully valid for equipment which is installed in the countries of the European Union and is covered by the directive 2002/96/EC. Countries outside the European Union may have other regulations regarding the disposal of electrical and electronic equipment.